



Fall, photos, and fun. It is back to school time!

September is synonymous with back to school. but did you know that it is also National Spinal Cord Injury Awareness Month? This is a month dedicated to honoring individuals who have sustained a spinal cord injury and the family members who support them. It also recognizes the dedication of local, regional, and national organizations, researchers, doctors, and volunteers across the country who are working to improve the lives of people living with mobility impairments every day. This includes you. We thank you for your support of our recipients and monkeys. Each of our recipients applied to our program looking for increased independence and companionship, which we are able to provide at no cost thanks to you.

Have your friends been filling your social media feeds with back to school photos? Seeing all these happy student faces is one of the many reasons we were inspired to join [Instagram](#)! Now you, too can follow your favorite monkey helpers.

Here at The Monkey College, we are extremely busy preparing for upcoming events and working on some very exciting projects (which we can only tease about at the moment!). The missing piece is you! Are you going to join us (virtually) for the Monkey Helpers' [online auction](#), opening on October 5? Or perhaps we will see you at the [Monkey Helpers' Annual Festivale](#), Saturday, October 21?

We hope to see you at one of our upcoming events!

Do you know someone who might benefit from having a service monkey? [Connect us!](#)



Meet the Monkeys

Fetch is one of the most important tasks that we teach our service monkeys, and one that our applicants ask for the most! Our trainers make it fun and rewarding for their primate students to learn their tasks, using small food rewards. As a supporter of our program, you help provide the peanut butter that our monkeys love so much!

Watch [Learning Fetch](#) to get an intimate look at one of our students in class!

[Watch Meet the Monkeys](#)



The Monkey Helpers' Annual Festivale!

The invitations are winging their way to mailboxes all across New England! Auction items are pouring in from around the country, cocktail recipes are being perfected, and [The Awesome](#) is confirmed! All we need now is you!

Co-chairs Sarah Davis and Eric Reddy look forward to welcoming you to The '80s edition of [The Monkey Helpers' Annual Festivale](#) at our NEW VENUE, [The Boston Design Center](#), on Saturday, October 21. Get your tickets today for this totally awesome event! ('80s attire optional.) Will you join us?

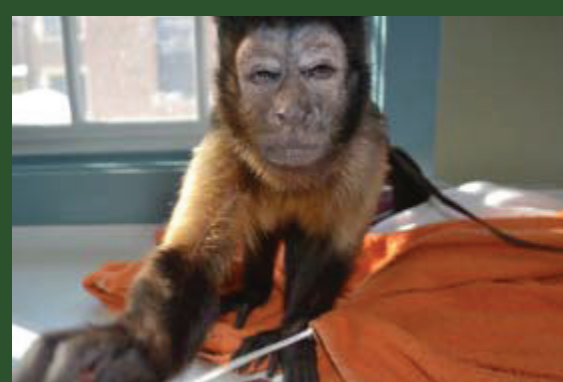
Get your [tickets](#) or get a [table](#) now!



Living Permanently Enabled

As classrooms fill back up this fall, so do our schedules with presentations to local schools! Our Youth Education Program, "Living Permanently Enabled", is a fun and lively 30- to 45-minute presentation focusing on disability awareness, traumatic injury prevention, and the concept of being permanently enabled in one's own life. Kids learn about monkey helpers, while creating their own understanding and definition of resilience. While a monkey does not attend, teachers have found their students to be interested, engaged, and thoughtful in their responses. As we tell kids "It is ok to want a monkey, but we never want you to need a monkey."

[Learn more about our program.](#)



Blooper of the Month

Helping Hands monkeys are great at learning and performing tasks, but not always great at posing for pictures!

Be sure to follow us on [Facebook](#), [Twitter](#), and [Instagram](#) to be a part of the fun and make your voice heard: vote for the image that will be featured in next month's blooper section!

[Home](#) | [Contact](#) | [About Us](#) | [Giving](#)

[Send an e-Card](#) | [Merchandise](#) | [Wishlist](#) | [MonkeyHugs](#)

Helping Hands: Monkey Helpers



Make a Gift



CFC #11196



Be sure to add our email address to your address book or safe senders list so our emails get to your inbox.

[Privacy Policy](#) | [Unsubscribe](#)

[Helping Hands: Monkey Helpers](#)

541 Cambridge Street, Boston, MA 02134